

20.05.2022

Ore: 9.00 - 12.30

POLITECNICO DI MILANO

Sala Consiglio Dipartimento di Energia
Edificio BL25 Campus Bovisa
Via Lambruschini, 4 - 20156 Milano

DA REMOTO

WEBINAR

DAL MONITORAGGIO ALLA MANUTENZIONE PREDITTIVA: l'utilizzo dei big data nella manutenzione di sale montate ferroviarie

AGENDA

- 9.00 - Registrazione partecipanti
- 9.15 - Saluto (Giorgio Spadi, CIFI Milano)
- 9.30 - Introduzione (Stefano Cantini, Lucchini RS)
- 9.45 - L'analisi dei dati:
metodologie, trend casi applicativi nel ferroviario e in altri settori (Pierluca Lanzi, Politecnico di Milano)
- 10.15 - Diagnostica di sale montate (Steven Cervello, Lucchini RS e Daniele Regazzi, Lucchini RS)
- 11.00 - Modelli di danneggiamento di ruote e assili (Stefano Beretta, Politecnico di Milano)
- 11.30 - Metodi di controllo NDT/POD (Michele Carboni, Politecnico di Milano)
- 12.00 - Q&A e conclusioni

Railway Division

LOOK BEYOND



GROUP
LUCCHINIRS

The global and reliable **Partner**
for the sustainable progress of mobility and industry.
Passion, talent and creativity for
advanced **Customer-orientated solutions**.

165 Years

of experience
in railway



1,500 people
in Italy
~2,500 globally



~500 Mio €

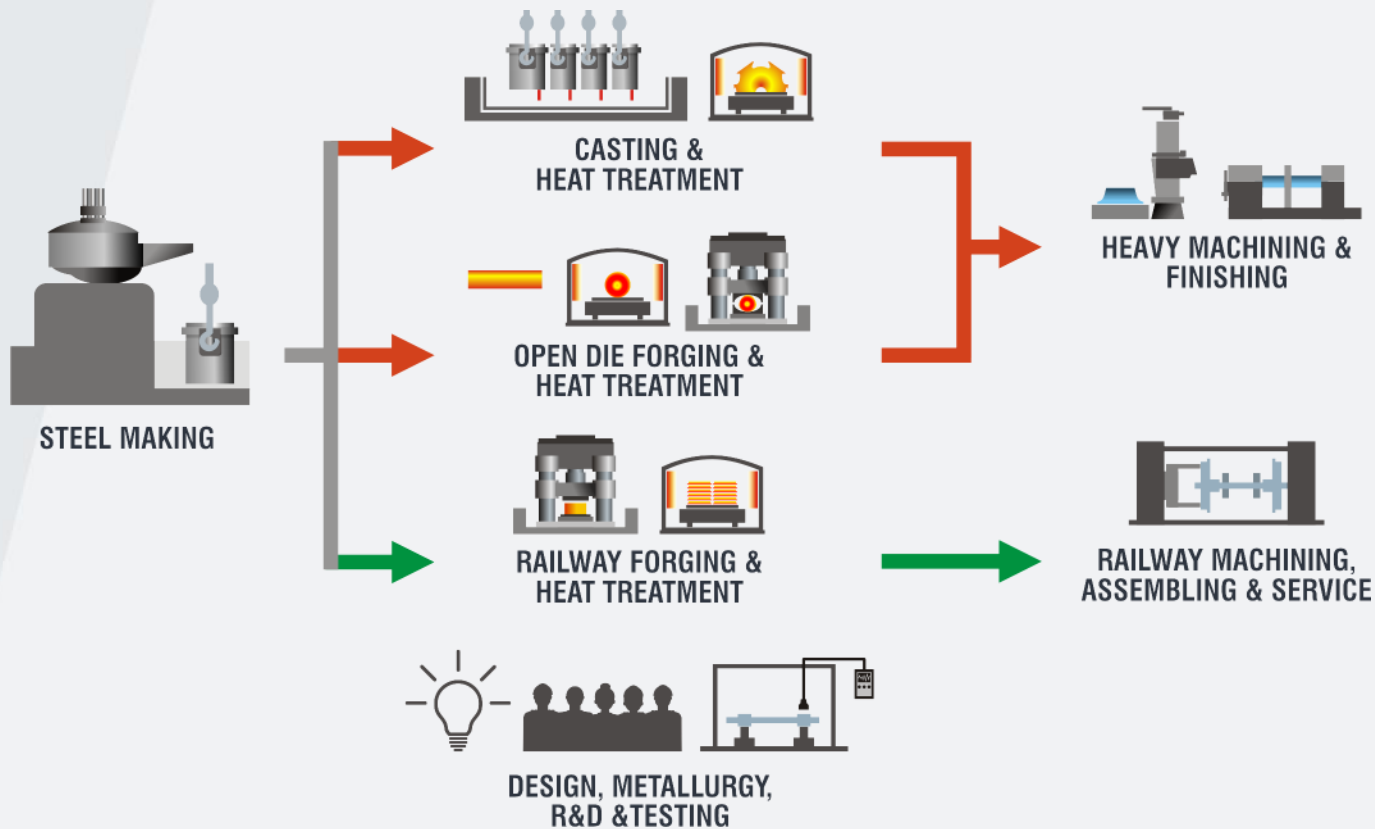


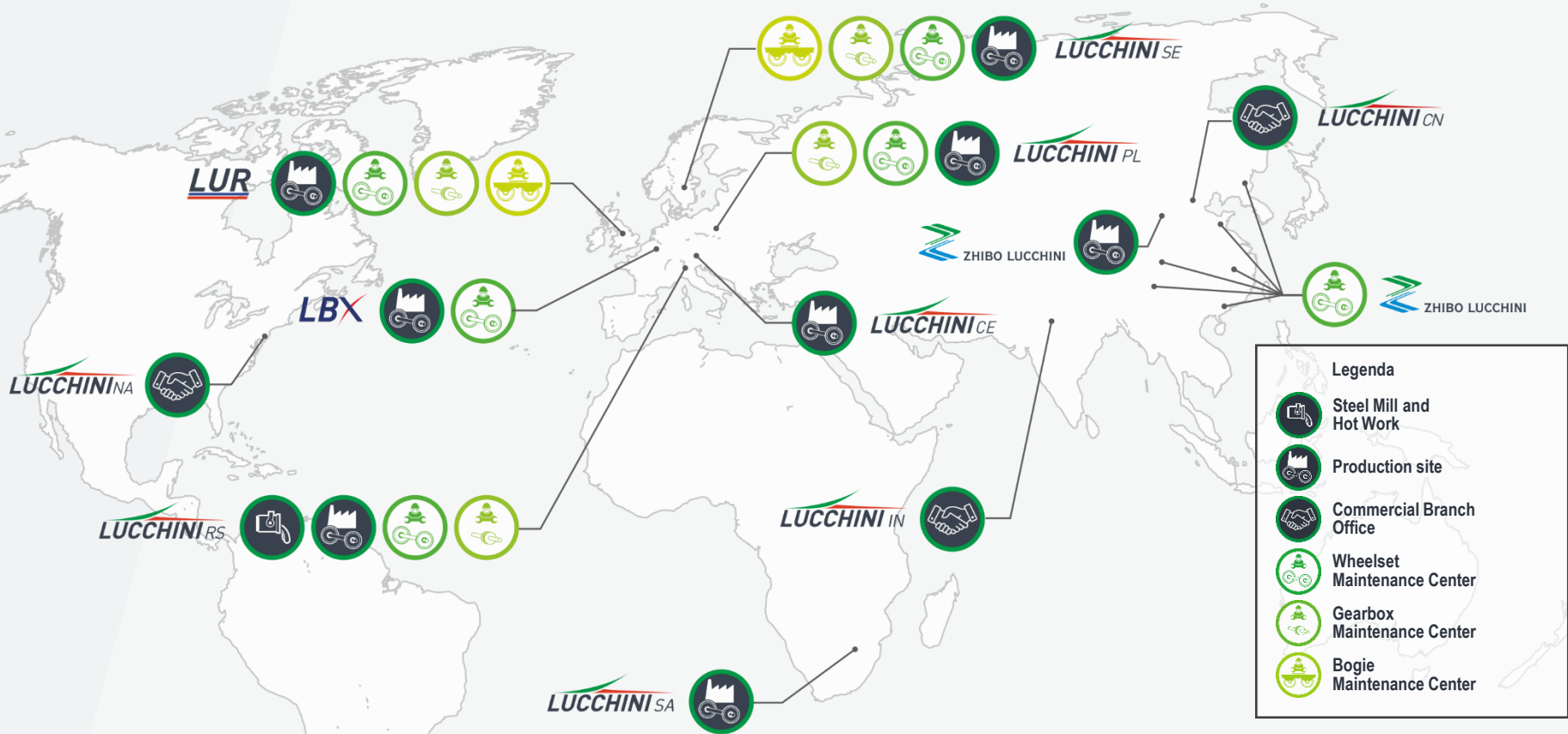
RAILWAY DIVISION

- wheels up to 260,000
- axles up to 40,000
- tyres up to 15,000
- wheelsets in excess of 25,000
- services
- applications

FORGING & CASTING DIVISION

- Ingots up to 240,000 tons
- castings up to 5,500 tons
- forgings & bars up to 50,000 tons
- tool steel up to 25,000 tons
- services
- applications









High Speed



Locomotive



Passenger



Freight

Condition Based Maintenance



SMARTSET VIBE
| VALUE IN DATA



SMARTSET LOAD
| VALUE IN DATA



Increase reliability of customer assets with data informed decision tool for condition-based maintenance

Noise Reduction



SYOPE PANEL
| VALUE IN SILENCE



SYOPE BRAW
| VALUE IN SILENCE



SYOPE LAYERS
| VALUE IN SILENCE



SYOPE BLOCKS
| VALUE IN SILENCE



SYOPE RING
| VALUE IN SILENCE



SYOPE SPOKES
| VALUE IN SILENCE

Reduce total rolling noise and eliminate curve squeal

Superior Material



HYPERLOS
| VALUE IN DURABILITY



SUPERLOS
| VALUE IN DURABILITY



SANDLOS
| VALUE IN DURABILITY



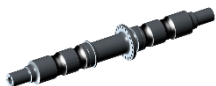
UPLOS
| VALUE IN DURABILITY



ARTICLOS
| VALUE IN DURABILITY

Increase resistance to rolling contact fatigue
Extend product durability

Boosting Safety



LURSHELL
| VALUE IN SAFETY



SAMT Probe
Crack propagation analysis

Improving Safety and Life Cycle

Advanced Design



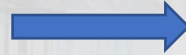
LIMOSSET
| VALUE IN DESIGN



SURA
| VALUE IN DESIGN

Customized solutions according to customer needs

Service conditions (loads)



Possible damages to safety critical components

Condition Based Maintenance

On board continuous monitoring

Data analytics

Digital Twin

Effective inspection technique (POD)

Optimized maintenance costs

In service inspections (fixed periodicity)

Suboptimal maintenance costs

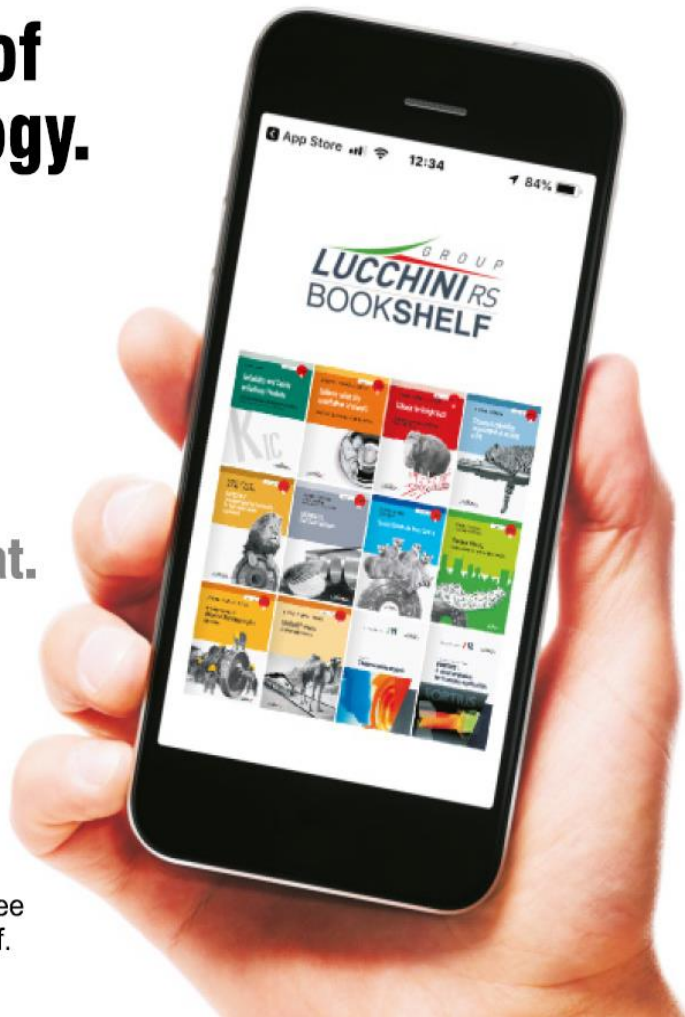


Culture of Technology.

Enjoy all the LRS Techno books in digital format.



Download the new free APP - LRS Bookshelf.



SERIES LRS TECHNO

GROUP
LUCCHINI RS

World Book Day

RECRUITMENT



- Assessment Center
- Interviews
- Testing



Not only
TECHNICAL KNOWLEDGE

But also
TRANSVERSAL SKILLS
Language skills
Digital competences

And
SOFT SKILLS
Communication
Proactivity
Self-motivation
Conflict resolution
Adaptability
Leadership

My DEVELOPMENT



TRAINING

- Technical
- Language
- Management (problem solving - project management – Lean culture)

WEB PROGRAM

- Interviews with Managers
- Technical webinars
- Company Areas Presentations

TRANSVERSAL ACTIVITIES

- Personal development activities (MBTI)



hr@lucchinirs.com

20.05.2022

Ore: 9.00 - 12.30

POLITECNICO DI MILANO

Sala Consiglio Dipartimento di Energia
Edificio BL25 Campus Bovisa
Via Lambruschini, 4 - 20156 Milano

DA REMOTO

WEBINAR

DAL MONITORAGGIO ALLA MANUTENZIONE PREDITTIVA: l'utilizzo dei big data nella manutenzione di sale montate ferroviarie

AGENDA

- 9.00 - Registrazione partecipanti
- 9.15 - Saluto (Giorgio Spadi, CIFI Milano)
- 9.30 - Introduzione (Stefano Cantini, Lucchini RS)
- 9.45 - L'analisi dei dati:
metodologie, trend casi applicativi nel ferroviario e in altri settori (Pierluca Lanzi, Politecnico di Milano)
- 10.15 - Diagnostica di sale montate (Steven Cervello, Lucchini RS e Daniele Regazzi, Lucchini RS)
- 11.00 - Modelli di danneggiamento di ruote e assili (Stefano Beretta, Politecnico di Milano)
- 11.30 - Metodi di controllo NDT/POD (Michele Carboni, Politecnico di Milano)
- 12.00 - Q&A e conclusioni